

Reproducible Technology Case Sharing

—— Remote Monitoring and Command Platform
for Petroleum Engineering

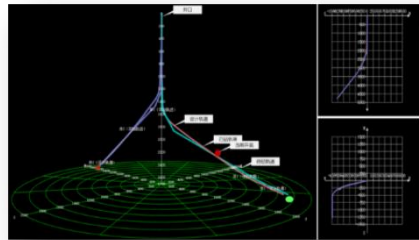
Beijing Anvision Technology Co., Ltd.

- **Introduction to the Platform**
- **Petroleum Engineering Remote Monitoring and Command Platform**
 - **Integrated Command Center**
 - **Real-time Data Monitoring**
 - **Daily Report Management**
 - **Smart Security System**
 - **Data Sharing**
 - **Mobile Application**
- **Summary of Technological Innovations**

The **Petroleum Engineering Remote Monitoring and Command Platform** is a comprehensive solution for the all-encompassing data collection and monitoring of on-site equipment status and operations in oilfield operations. It is an integrated platform for petroleum engineering that possesses real-time alerting, issue tracking, predictive analysis, and decision analysis capabilities.



Integrated Remote Transmission at Wellheads



Real-time Directional Data Analysis



Real-time Data Analysis for Logging Operations



Integrated Command Center



Smart Security Solutions

方案序号	蒸发量	对入水速	流速	液化压力	燃气质量
单位	t	℃	℃	MPa	%
1	0.4	110	95	0.39	3.1
2	6.5	92.5	81	0.31	2.4
3	7.2	99.1	93	0.31	2.9
4	0.2	94.6	99	4.5	2.1
5	0.4	91.8	91	0.40	3.9
6	0.5	91.1	96	0.45	2.9
7	0.1	99.2	96	0.40	4

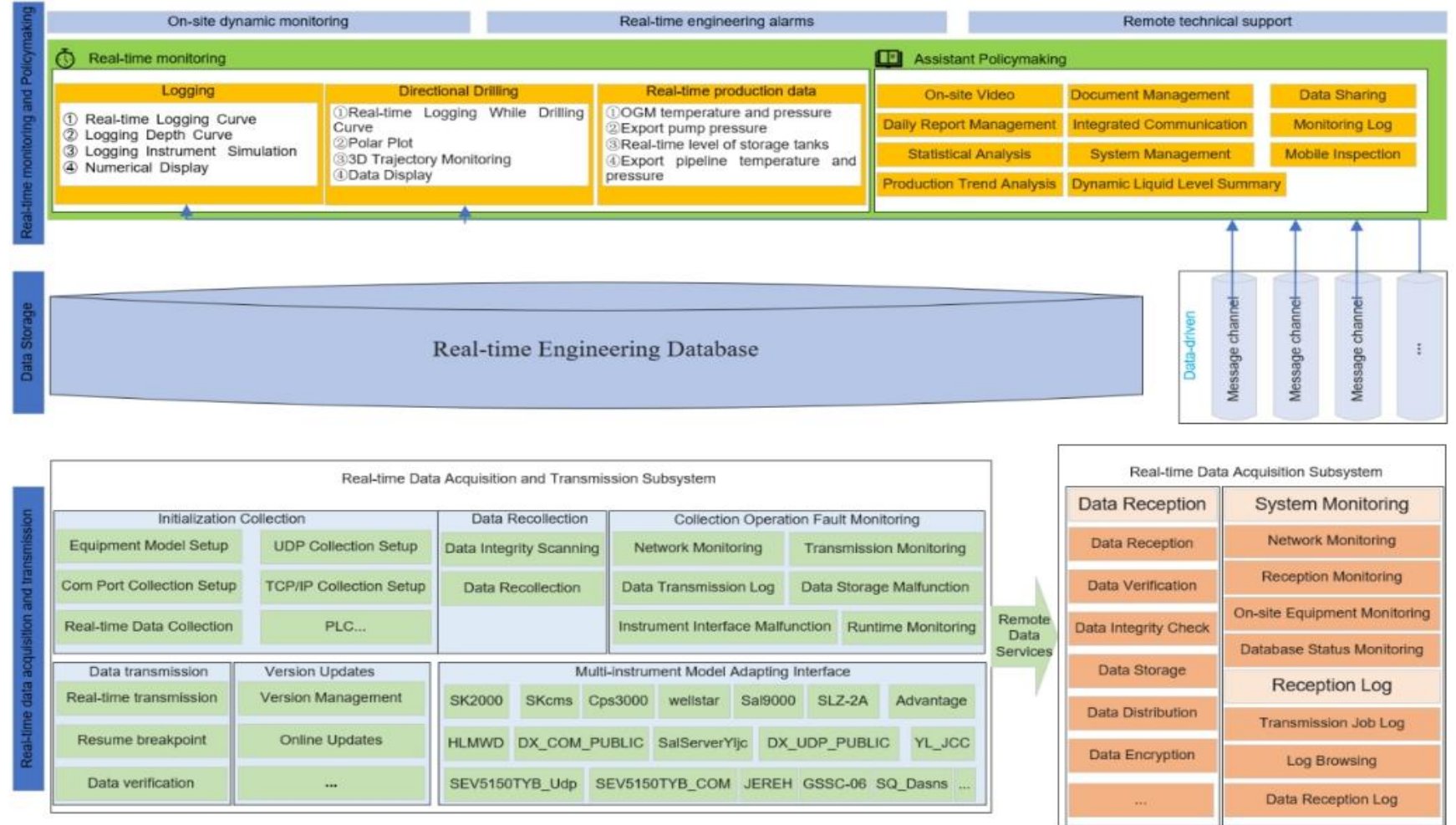
Production Management Daily Reports



Multi-platform Accessibility

Key Features:

- Covering **data collection, transmission, and storage**, enabling data sharing and analysis across different business scenarios
- **Dynamic monitoring of on-site operations**
- **Real-time engineering alerts**
- **Remote technical support**
- **Full coverage of petroleum engineering operations**
- **Loosely coupled, modular architecture, easy to expand**



Customer Pain Points



Difficulty in On-site Operation Monitoring

Data Acquisition Challenges, Unable to Grasp Real-time Situations



Lack of a Unified Management Platform, Inability to Share Data

No Unified Platform, Inability to Share and Apply Various Production Data



Difficulty in Adjusting Production Strategies

Inability to effectively share data, impacting the timely adjustment of production strategies



Challenges in Controlling Operational Risks

Inability to Adjust Operation Strategies in a Timely Manner, Lack of a Unified Risk Management Platform



Challenges in Controlling Operation Quality and Efficiency

Struggles in real-time monitoring and adjustment of operation quality and efficiency

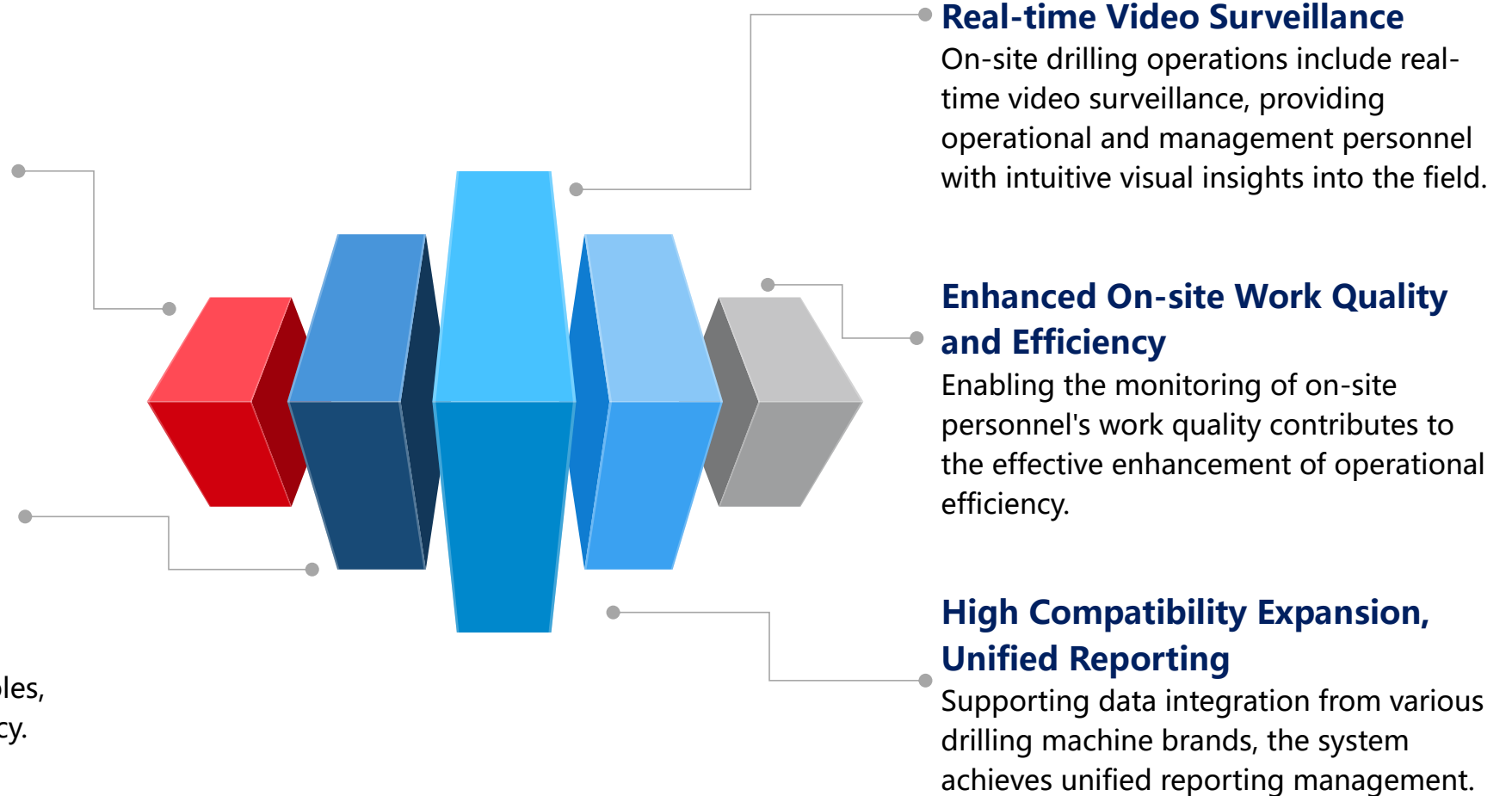
Project Background and Market Opportunities

Real-time Data Monitoring

On-site drilling operations feature real-time data monitoring, effectively identifying anomalies and efficiently sharing job status to ensure safe operations.

Unified Platform, Collaborative Sharing

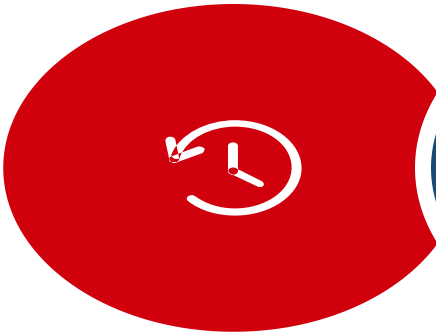
Implementing a unified platform management system facilitates visual sharing among personnel in different roles, thereby enhancing overall work efficiency.



An efficient, intelligent, and secure Petroleum engineering operation management tool, aiming to achieve more efficient on-site operations

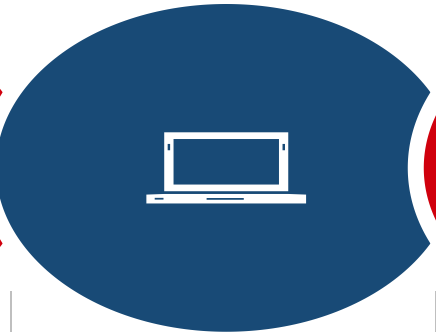
- **Introduction to the Platform**
- **Petroleum Engineering Remote Monitoring and Command Platform**
 - **Integrated Command Center**
 - **Real-time Data Monitoring**
 - **Daily Report Management**
 - **Smart Security System**
 - **Data Sharing**
 - **Mobile Application**
- **Summary of Technological Innovations**

Data Acquisition



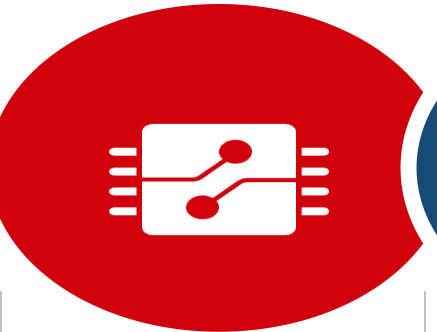
Real-time Capability

- Efficient and instant data collection
- Achieving **data collection and return per second**



Compatibility

- Compatible with **30** types of drilling parameter instruments, over **30** logging instruments,
- Support common large-scale fracturing devices and directional instruments,
- **Support customization options.**



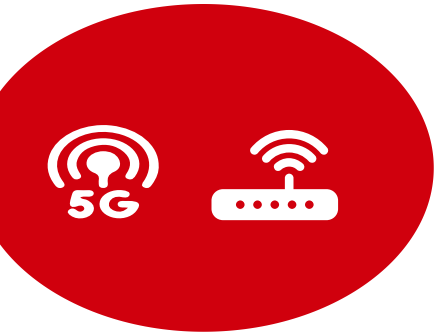
Comprehensiveness

- Includes real-time (**drilling, directional, fracturing, etc.**), daily reports, and video data for detailed analysis.



Ease of Use

- **One-time configuration**, permanently synchronized with the drilling machine
- **Eliminating the need for repetitive operations.**



Network Adaptability

- Supports **ZigBee, 4/5G, WIFI, WAN**
- Ensuring **stable operation** under different network conditions.



Field

东方智慧 全球分享
Oriental wisdom , Global sharing

Automatic Collection



Data collection nodes

Automatic Storage

Data Management

方量序号	蒸水量	对入水速	油温	雾化压力	燃气浓度
单位	t	℃	℃	MPa	%
1	8.4	130	95	0.39	3.1
2	6.5	92.5	91	0.31	2.4
3	7.2	99.1	93	0.31	2.9
4	8.2	94.6	99	4.5	2.1
5	8.4	91.8	91	0.40	3.9
6	8.5	91.1	96	0.40	2.9
7	8.1	99.2	96	0.40	4

- Standardized Dumping
- Necessary Audits

Electronic Documentation



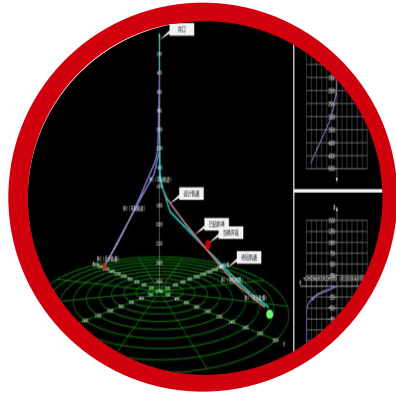
- Standardized Information

Data Analysis



Comprehensiveness

- Includes engineering data (drilling, directional, fracturing, etc.), HSE data, and video data analysis
- Enabling users to gain a comprehensive understanding from multiple perspectives.



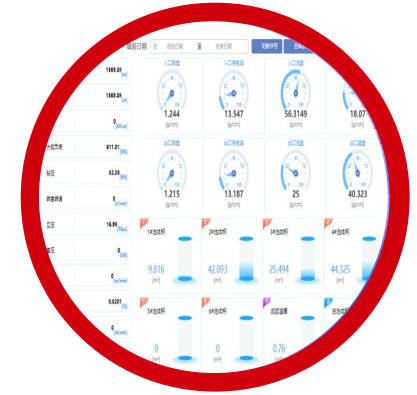
Professionalism

- Offering various professional graphics and charts related to petroleum engineering
- Help users in interpreting complex data patterns and trends effectively
- Supporting multidimensional and multi-professional analysis



Visualization

- Various forms of graphical data display.
- Make complex data easier to understand and remember



Usability

- Providing diverse analytical components that are intuitive and user-friendly,
- Allowing even non-professionals to effectively utilize the data

Early Warning Monitoring

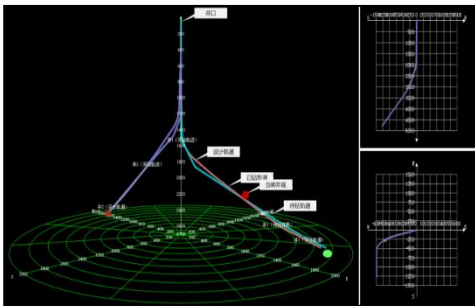
Real-time Fracturing Alert Iteration

Through sensors and data analysis, predict and alert potential issues during the fracturing process.



Drilling Progress Alert

By analyzing drilling data, predict drilling progress to facilitate adjustments to operational plans.



Directional Drift Alert

Real-time monitoring of the underground equipment's movement direction to prevent drift accidents.

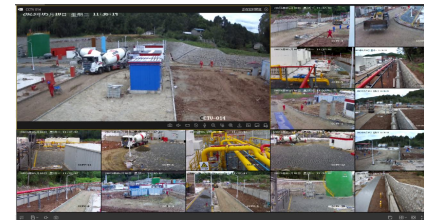
Mud Ratio Alert

By monitoring mud ratios, prevent underground accidents caused by improper ratios.



AI Video Alert

Analyze real-time drilling site videos to alert potential risks.



On-site Consumables Alert

Through monitoring equipment operating status and consumables usage, proactively alert shortages of consumables.



Integrated Visualization Dashboard



Real-time Data Display

Instantly showcase various production data and equipment information, ensuring prompt response to decision-making scenarios.

Multi-source Data Integration

Integrate data from diverse sources: sensor data, real-time monitoring, statistical information, etc.

Efficient Data Analysis

Efficient data processing and analysis to help users extract valuable information from large datasets.

3D Visualization

Real-time reflection of the actual wellsite production process, achieving three-dimensional visual representation.

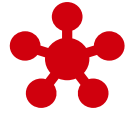
Customization and Flexibility

Customize displayed content and formats as needed, including charts, maps, video streams, etc.

Mobile Application



• **Comprehensiveness:** Comprehensive functionality and rich content.



• **Compatibility:** Wide support for devices and operating systems.



• **Usability:** Intuitive and easy-to-navigate user interface.



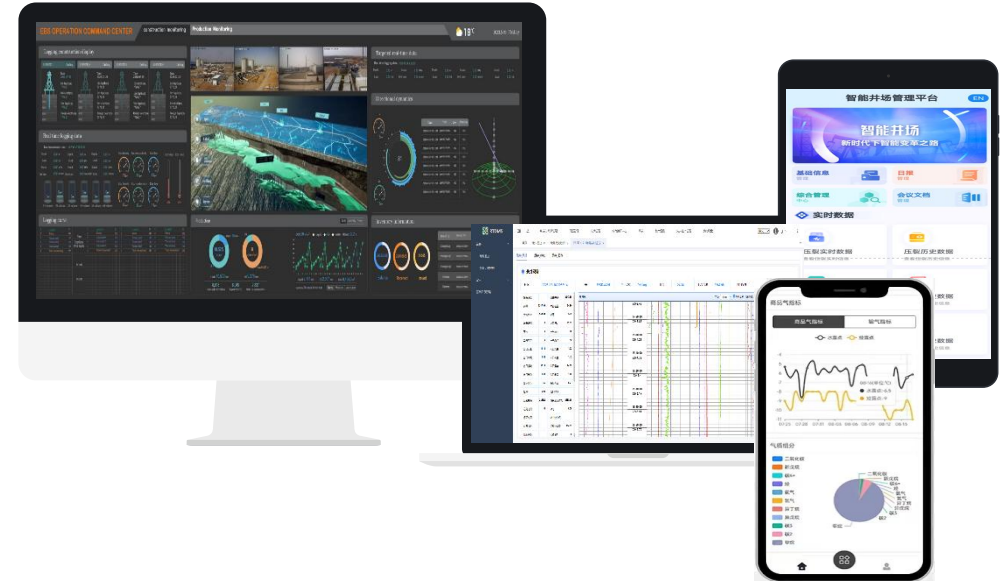
• **Data Security:** Robust data protection and privacy security.



• **Response Speed:** Fast and seamless user experience.



• **Network Adaptability:** Stable performance, adapting to various network environments.



Collaborative Sharing

Terminal Sharing

Large Screen Display Terminal



PC Management Monitoring Terminal



Mobile Portable Terminal



Role Sharing

On-site Operations Personnel



Resource Management Personnel



Management Decision Makers



Environmental Monitoring Personnel



Safety Supervisors



Data Sharing

Database



API Interfaces



Data Security



Data Standards



✓ *Data Sharing, Data Standards, Data Security*

✓ *Decision Support, Collaborative Cooperation, Efficiency Enhancement*

Smart Command Center



- **Rapid Implementation:** Based on Anvision's global supply chain, utilizing modular and fast deployment for easy integration, enabling quick initiation and application.



- **Visual Experience:** Offers an intelligent integrated audio-video control system with dual LED HD large screens, supporting 8K displays.



- **Intelligent Devices:** Provides a smart paperless meeting system supporting document organization, schedule management, status reminders, and tablet interactive operations, facilitating data retrieval and sharing.



- **Data Fusion:** Integrates information from multiple sources, displays real-time data streams, facilitating comprehensive analysis and monitoring.



- **Introduction to the Platform**
- **Petroleum Engineering Remote Monitoring and Command Platform**
 - **Integrated Command Center**
 - **Real-time Data Monitoring**
 - **Daily Report Management**
 - **Smart Security System**
 - **Data Sharing**
 - **Mobile Application**
- **Summary of Technological Innovations**

Summary of Technological Innovations

Comprehensive Coverage Across All Professions and Scenarios

Encompassing various aspects of petroleum engineering, including drilling, side-logging experiments (logging), and other critical operations, Monitoring and managing the entire process from exploration to production.

Multi-Protocol and Extensive Compatibility

Seamlessly integrating multiple devices, software APIs, and supporting various data formats and communication protocols to ensure effective communication between different devices and systems.

Innovative Interactive Interface

An intuitive user interface that simplifies complex operations, enabling even non-professionals to use the system with ease.



Intelligent AI Analysis and Alerts

Utilizing data analysis and machine learning algorithms to monitor operational status in real-time, promptly detecting anomalies, issuing early warnings for potential risks and faults, and assisting in taking preventive measures.

Multi-dimensional Visualization Dashboard

Diverse data visualization tools making complex data and analysis results easy to understand, empowering clients to better comprehend and manage on-site situations.

Multi-role, Multi-terminal Collaborative Sharing

Supporting team collaboration, enabling real-time information sharing and operational coordination among staff in different regions and departments. Providing a secure data sharing mechanism to ensure information security and permission management.

*Committed to Making Digitalization
in the Oil and Gas Industry
Simple and Practical*